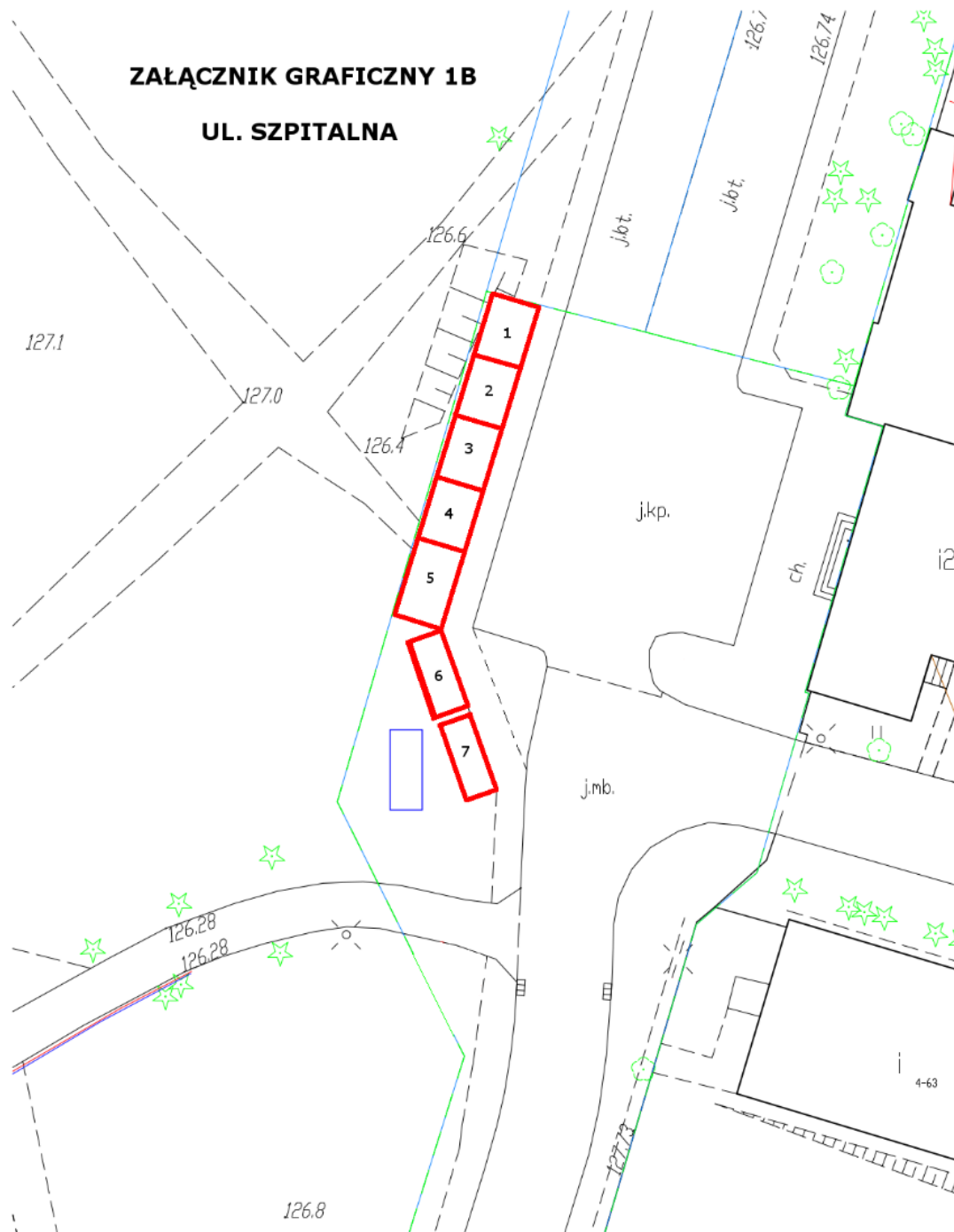


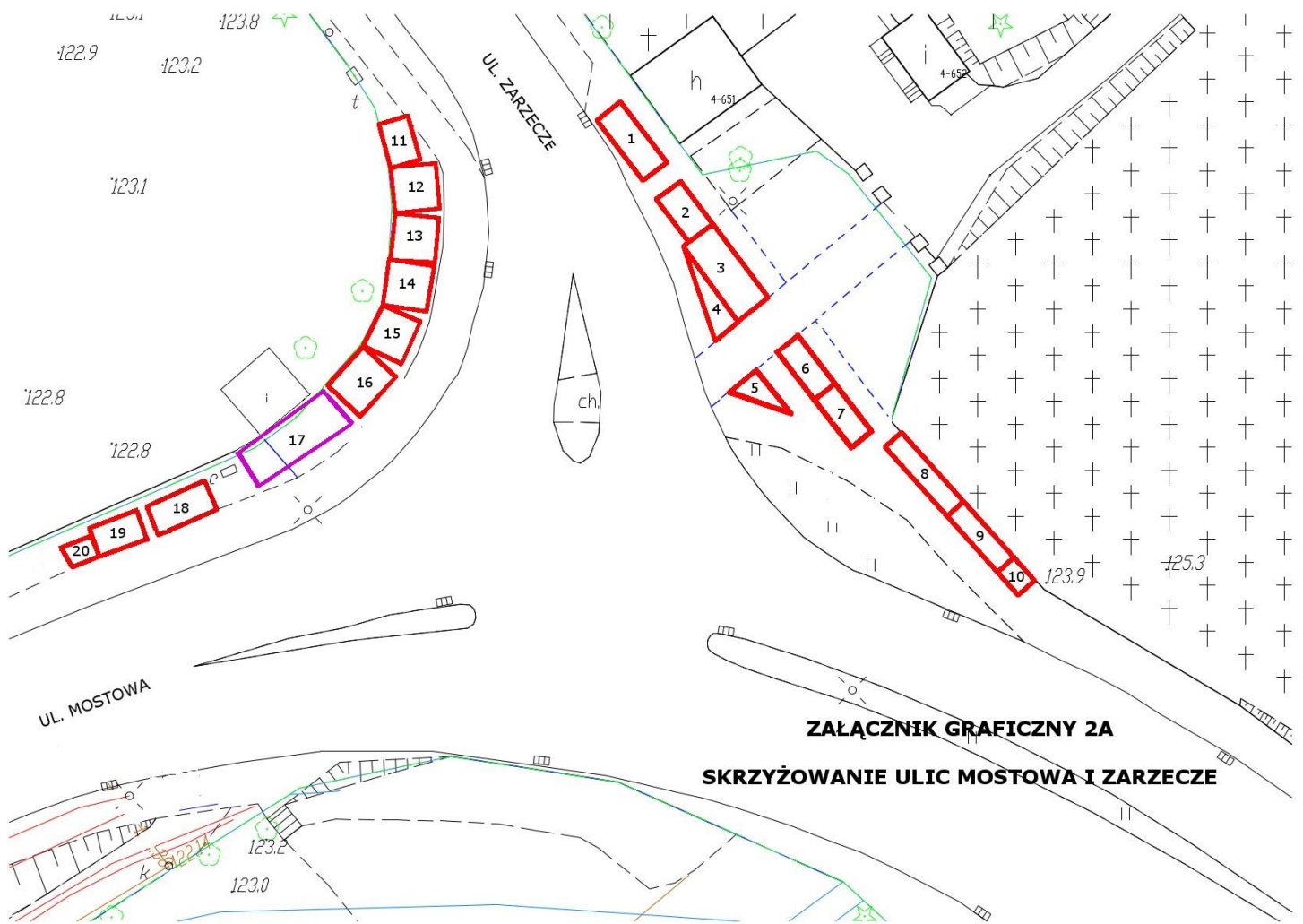
## Wykaz stoisk tymczasowych do załącznika nr 1A

1. 2,0 m x 4,0 m = 8,0 m<sup>2</sup>
2. 2,0 m x 3,5 m = 7,0 m<sup>2</sup>
3. 2,5 m x 6,0 m = 15,0 m<sup>2</sup>
4. 2,0 m x 6,0 m x 6,5 m = 6,0 m<sup>2</sup>
5. 2,5 m x 4,0 m x 5,0 m = 5,0 m<sup>2</sup>
6. 2,0 m x 4,0 m = 8,0 m<sup>2</sup>
7. 2,0 m x 4,0 m = 8,0 m<sup>2</sup>
8. 2,5 m x 3,0 m = 7,5 m<sup>2</sup>
9. 2,5 m x 3,5 m = 8,75 m<sup>2</sup>
10. 2,5 m x 8,0 m = 20,0 m<sup>2</sup>
11. 2,0 m x 4,0 m = 8,0 m<sup>2</sup>



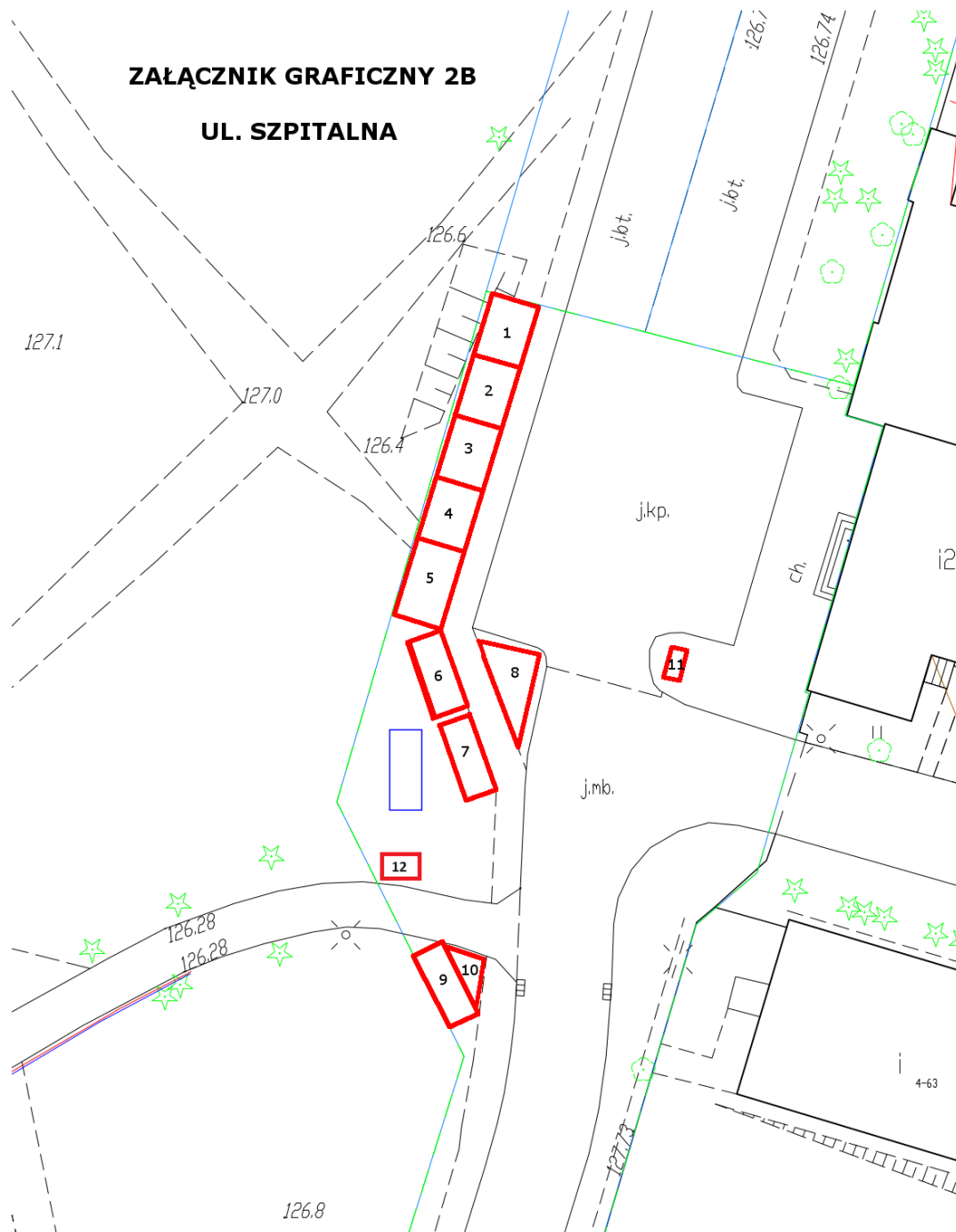
## Wykaz stoisk tymczasowych do załącznika nr 1B

1. 3,0 m x 4,0 m = 12,0 m<sup>2</sup>
2. 3,0 m x 4,0 m = 12,0 m<sup>2</sup>
3. 3,0 m x 4,0 m = 12,0 m<sup>2</sup>
4. 3,0 m x 4,0 m = 12,0 m<sup>2</sup>
5. 3,0 m x 5,0 m = 15,0 m<sup>2</sup>
6. 2,0 m x 5,0 m = 10,0 m<sup>2</sup>
7. 2,0 m x 5,0 m = 10,0 m<sup>2</sup>



## Wykaz stoisk tymczasowych do załącznika nr 2A

- |     |  |     |                                     |
|-----|--|-----|-------------------------------------|
| 1.  | 2,0 m x 4,0 m = 8,0 m <sup>2</sup>         | 12. | 3,0 m x 3,0 m = 9,0 m <sup>2</sup>  |
| 2.  | 2,0 m x 3,5 m = 7,0 m <sup>2</sup>         | 13. | 3,0 m x 3,0 m = 9,0 m <sup>2</sup>  |
| 3.  | 2,5 m x 6,0 m = 15,0 m <sup>2</sup>        | 14. | 3,0 m x 3,0 m = 9,0 m <sup>2</sup>  |
| 4.  | 2,0 m x 6,0 m x 6,5 m = 6,0 m <sup>2</sup> | 15. | 2,5 m x 3,0 m = 7,5 m <sup>2</sup>  |
| 5.  | 2,5 m x 4,0 m x 5,0 m = 5,0 m <sup>2</sup> | 16. | 2,5 m x 3,5 m = 8,75 m <sup>2</sup> |
| 6.  | 2,0 m x 4,0 m = 8,0 m <sup>2</sup>         | 17. | 2,5 m x 8,0 m = 20,0 m <sup>2</sup> |
| 7.  | 2,0 m x 4,0 m = 8,0 m <sup>2</sup>         | 18. | 2,0 m x 4,0 m = 8,0 m <sup>2</sup>  |
| 8.  | 1,5 m x 5,0 m = 7,5 m <sup>2</sup>         | 19. | 1,5 m x 2,0 m = 3,0 m <sup>2</sup>  |
| 9.  | 1,5 m x 5,0 m = 7,5 m <sup>2</sup>         | 20. | 1,5 m x 2,0 m = 3,0 m <sup>2</sup>  |
| 10. | 1,5 m x 2,0 m = 3,0 m <sup>2</sup>         |     |                                     |
| 11. | 2,0 m x 3,0 m = 6,0 m <sup>2</sup>         |     |                                     |



## Wykaz stoisk tymczasowych do załącznika nr 2B

- |  |   |
|--|---|
| 1. 3,0 m x 4,0 m = 12,0 m <sup>2</sup> | 7. 2,0 m x 5,0 m = 10,0 m <sup>2</sup>          |
| 2. 3,0 m x 4,0 m = 12,0 m <sup>2</sup> | 8. 4,0 m x 6,0 m x 7,0 m = 12,0 m <sup>2</sup>  |
| 3. 3,0 m x 4,0 m = 12,0 m <sup>2</sup> | 9. 2,0 m x 5,0 m = 10,0 m <sup>2</sup>          |
| 4. 3,0 m x 4,0 m = 12,0 m <sup>2</sup> | 10. 2,5 m x 3,0 m x 4,0 m = 3,75 m <sup>2</sup> |
| 5. 3,0 m x 5,0 m = 15,0 m <sup>2</sup> | 11. 2,0 m x 1,0 m = 2,0 m <sup>2</sup>          |
| 6. 2,0 m x 5,0 m = 10,0 m <sup>2</sup> | 12. 2,0 m x 1,5 m = 3,0 m <sup>2</sup>          |

